

VehiclePath 2.0 Change Log and Feature Release

Spireon Inc. is proud to announce the release of the new and improved VehiclePath 2.0 software. This document outlines the navigational changes made to the VehiclePath user interface as well as the new features that make VehiclePath 2.0 the most modern, streamlined and full-featured user interface we've offered to date.

Table of Contents

Table of Contents.....	2
Additions.....	3
Control Panel.....	3
Clustering.....	4
View Options.....	5
Tabbed Browsing.....	6
Bookmarks.....	6
Vehicles.....	6
Edit Vehicle Form.....	7
Geofences.....	7
Reports.....	7
Messaging.....	8
Icons.....	10
Dispatch.....	10
Vehicle Location History.....	10
Groups.....	11
Vehicle Counter.....	11

Additions:

Control Panel:

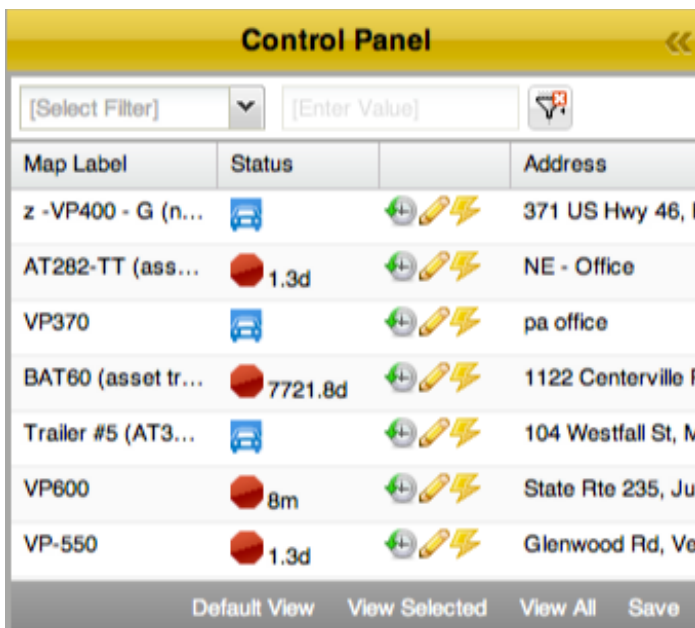
Control Panel view options now include:

“Default View” – Restores the default layout of the Control Panel

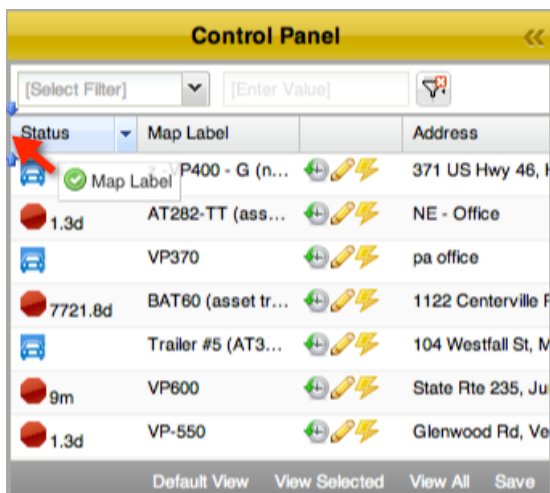
“View All” – View all columns in the Control Panel

“Save” – Save current Control Panel layout as default

These changes allow users to set-up the control panel in the configuration that best meets their needs before saving it for future use.

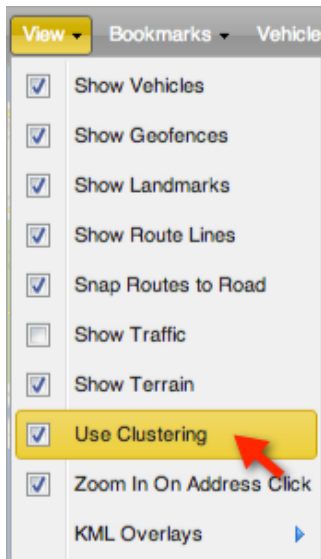


In addition to using the Control Panel Option check boxes to hide or display columns, column headers can be dragged and dropped into a user's preferred configuration.



Clustering:

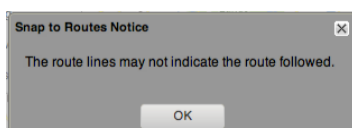
Instead of checking a “Suppress Clustering” check box in Control Panel Options to toggle clustering, a ‘Use Clustering” check box has been implemented in the new “View” dropdown menu.

**View Options:**

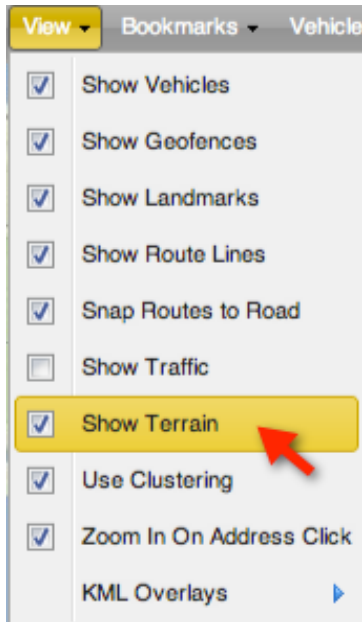
“Snap Routes to Road” allows users to snap route lines to roads.



Note: Route lines may not indicate the route followed.

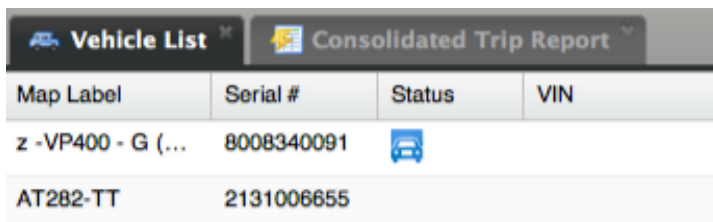


“Show Terrain” has also been added to View Options to toggle between satellite and conventional map views.



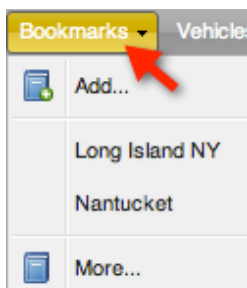
Tabbed Browsing:

Windows opened via the accordion menus in the left-hand navigation of the Reports, Set Up and Messaging tabs will be opened as individual tabs within their host tab.



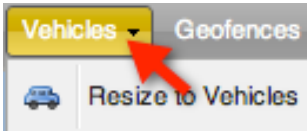
Bookmarks:

Bookmarks have been implemented in the new Map view to make it easier for users to select a commonly used region of the map to be displayed. To bookmark the current map view users must simply select “Add” from the Bookmarks dropdown menu, name the bookmark and click “OK”.



Vehicles:

A “Vehicles” dropdown menu has been implemented in the Map tab, which houses the “Resize to Vehicles” option, which allows users to resize their map view to accommodate all of the vehicles they’ve selected in map view.

**Edit Vehicle Form:**

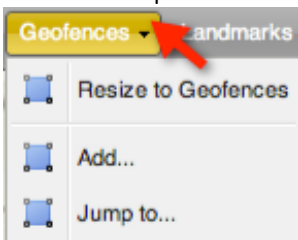
A field for the driver’s name has been added to the “Edit Vehicle” form. The driver’s name will be displayed in the “Vehicle Location History” window’s header.

 Two screenshots are shown. The left screenshot is the 'Edit Vehicle' form, which includes fields for Map Label, Vehicle Make, Vehicle Model, Vehicle Year, VIN, Odometer (Miles), Driver Name, Driver Email, Driver Cell, Tracking Enabled, Text Color, Label Color, and Icon. A red arrow points to the 'Driver Name' field. The right screenshot is the 'Vehicle Location History' window, which displays the Map Label (BAT60), Driver Name (BAT 60 Driver), and Serial # (3131001220).
Geofences:

Geofences now have their own dropdown menu in the map tab instead of only being available by right clicking the map. Options in the Geofences dropdown include:

“Add” - Geofences directly from the geofences dropdown

“Jump to” - Focus the map directly on the selected geofence

**Reports:**

Clicking “Get Report Now” under “Run Report” in the Get it Now accordion menu on the Reports page will open the “Get Report Now” form where users can input the parameters they’d like to report on and either click “Submit” to run a one-time report, or “Save as Favorite” to make the report available under “Favorite Reports” in the “Get it Now” accordion menu on the Reports tab.

Run Report Favorite: Consolidated trip (Jim)

Report Type:

Group:

Vehicle:

Start Date:

Stop Date:

Order Vehicles By:

Output Type:

All Day: ☒

Valid From:

Valid To:

Recipient Email:

Time Zone:

Dashboards have also been added to provide easy access to many commonly used reporting parameters within a single window.

Reports	Vehicle List	Consolidated Trip Rep
Get It Now	Map Label	Serial #
Automated Reports	z -VP400 - G (...)	8008340091
Dashboards	AT282-TT	2131006655
Current Vehicle Status	VP370	1631040032
View Current Vehicle Status	BAT60	3131001220
	Trailer #5 (AT3...	1731003010
	VP600	4431010712
	VP-550	4331092106

Map Overview Control:

The arrow icon in the bottom right-hand corner of the map in the Map tab triggers a pop-out 'Map Overview Control' window where users can drag and drop a visual representation of their map's viewing area on a small, zoomed-out map in order to control the area displayed in the main map window.

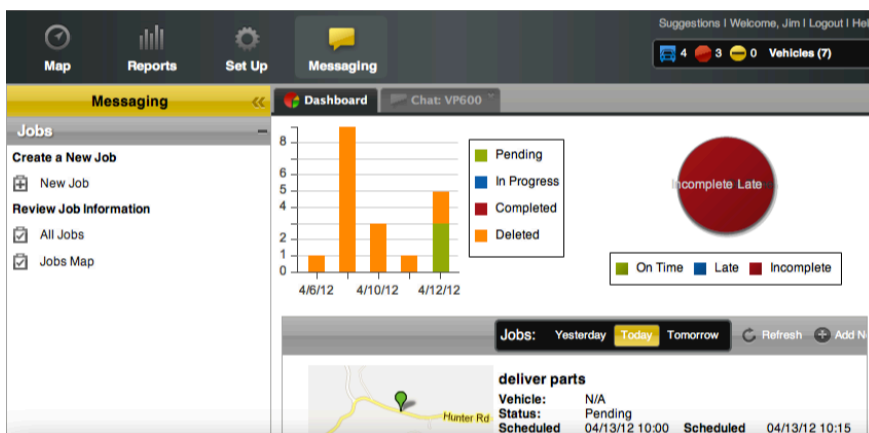


Messaging:

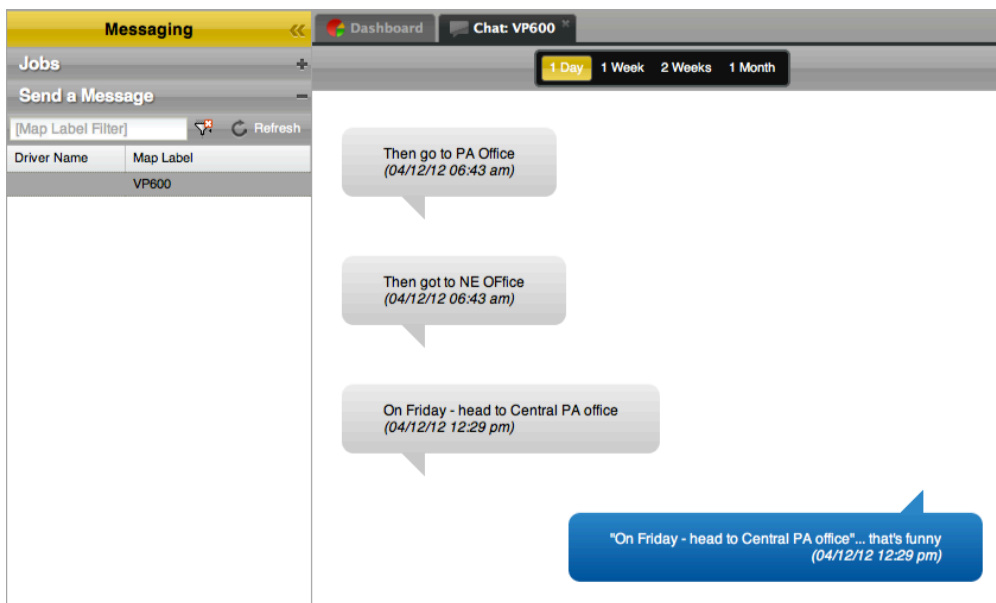
The Messaging tab contains exciting new functionality for communicating with drivers when used with Garmin devices compatible with the VP600-NAV

To assign a vehicle a “Job”, click “New Job” under “Create a New Job” in the Jobs accordion menu on the Messaging tab to open the “New Job” form. After entering all the necessary information into the “New Job” form, clicking save will enter the job into the database, which will be displayed as “Pending” in the jobs list on the Messaging tab.

The “Jobs” dashboard houses grids and graphical representations for job data such as: # pending, in progress or completed, incomplete vs. late, or on time plus map views and other information for each job.

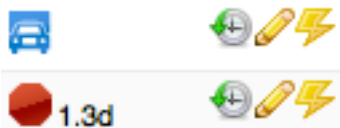


The Messaging tab also offers users the ability to send a message directly to a vehicle using the two-way communication functionality found in the Send a Message accordion menu on the Messaging tab.



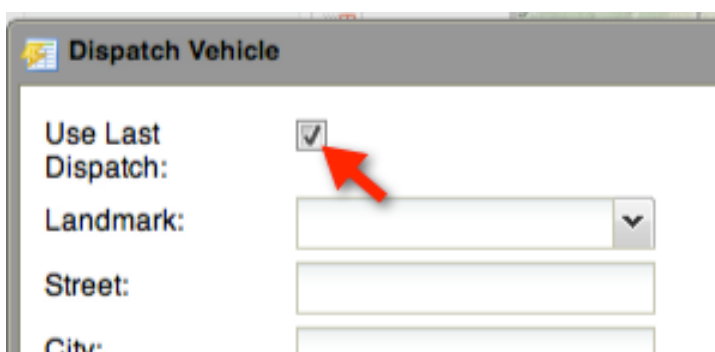
Icons:

All graphics and icons have been updated for a more aesthetically pleasing, modern look and feel.



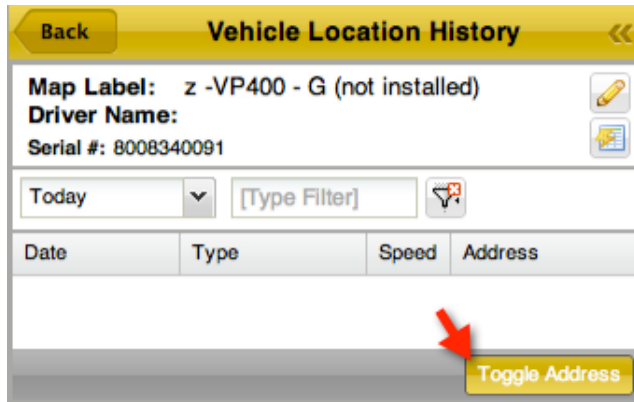
Dispatch:

A check box has been added to "Use Last Dispatch" which allows users to re-use the specifications from their last recorded dispatch without having to re-enter the information.

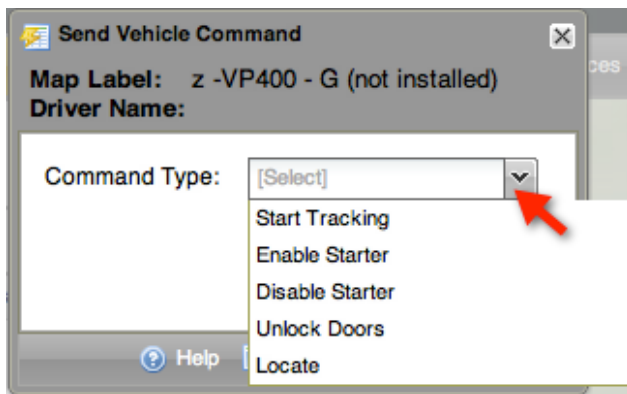


Vehicle Location History

The “Address” check box in Vehicle Location History has been replaced with a “Toggle Address” button in the bottom right-hand corner of the Vehicle Location History window.

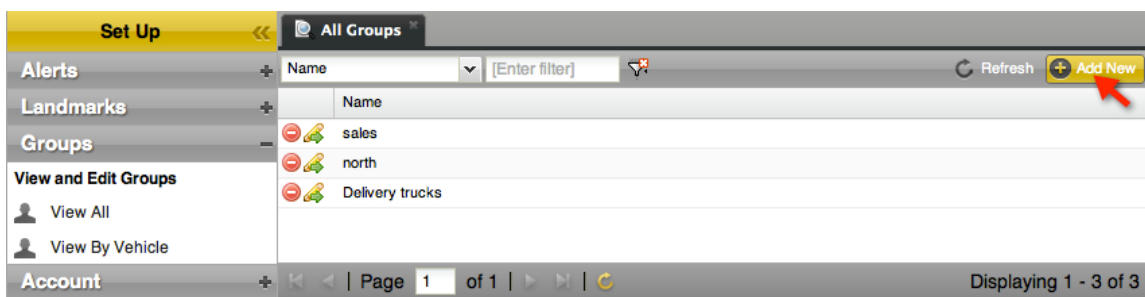


In addition to being able to locate a vehicle with the “Send Vehicle Command” hot button in vehicle history, users can now send “Enable/Disable Starter”, “Unlock Doors” and “Locate” commands for all devices as well as the “Start Tracking” command for Bat60.



Groups:

To add a group, go to view all groups in the Groups accordion menu on the Map tab and click use the “Add” button in the top right corner of the “Groups” window.



Status/Vehicle Counter:

A vehicle counter has been implemented and can be found in the upper right hand corner of any screen in the user interface. The counter shows the number of total vehicles associated with the user's account as well as a separate reading for vehicles, which are in "Moving", "Stopped" or "Unauthorized Movement" states.



Clicking any of the status icons will open the Map tab and filter the Control Panel to only display vehicles in that state.



Clicking "Total Vehicles" will open the Map tab and clear any filtering in the Control Panel.

